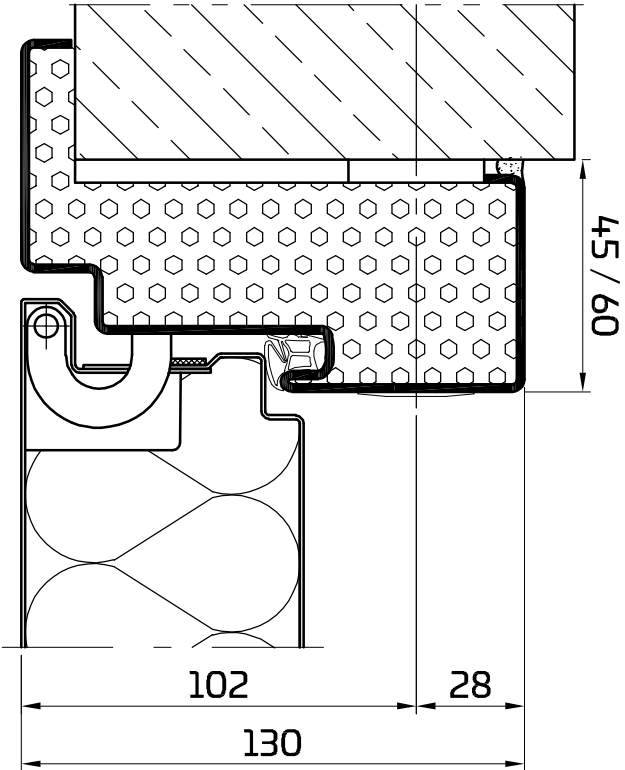
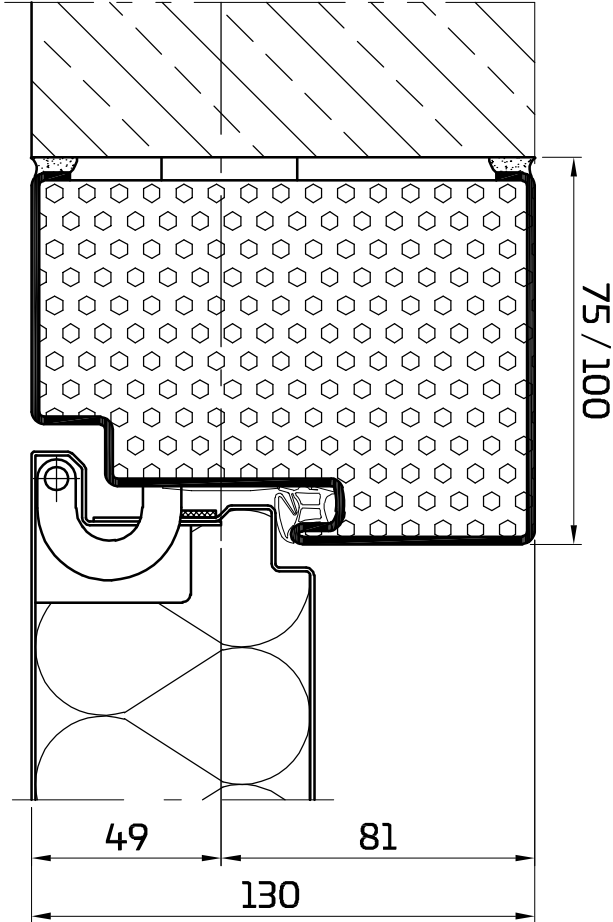


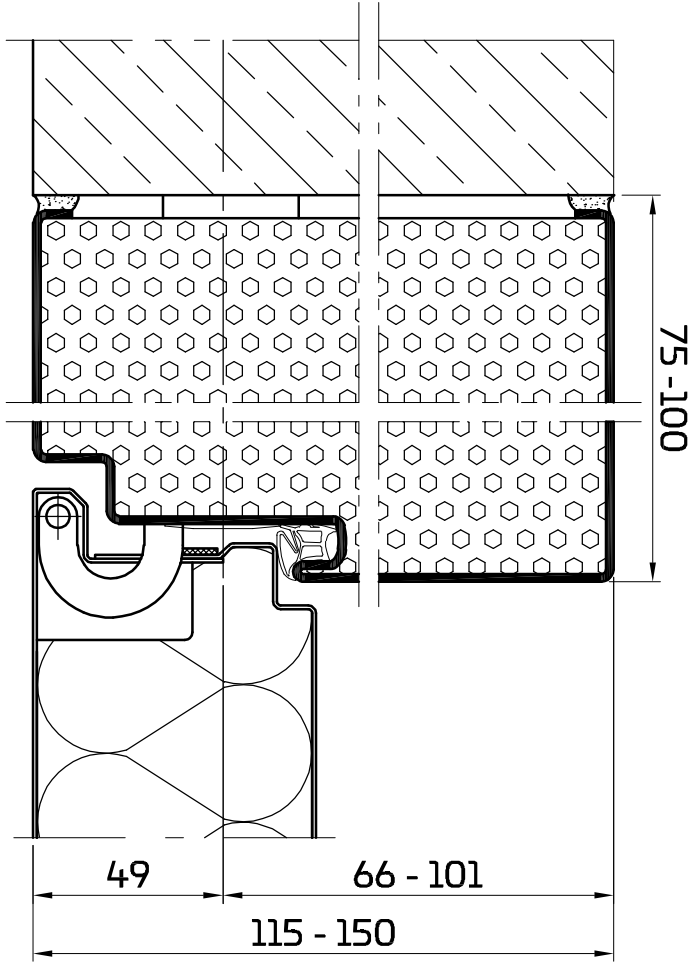
Eck 45 / 60
00 / 30



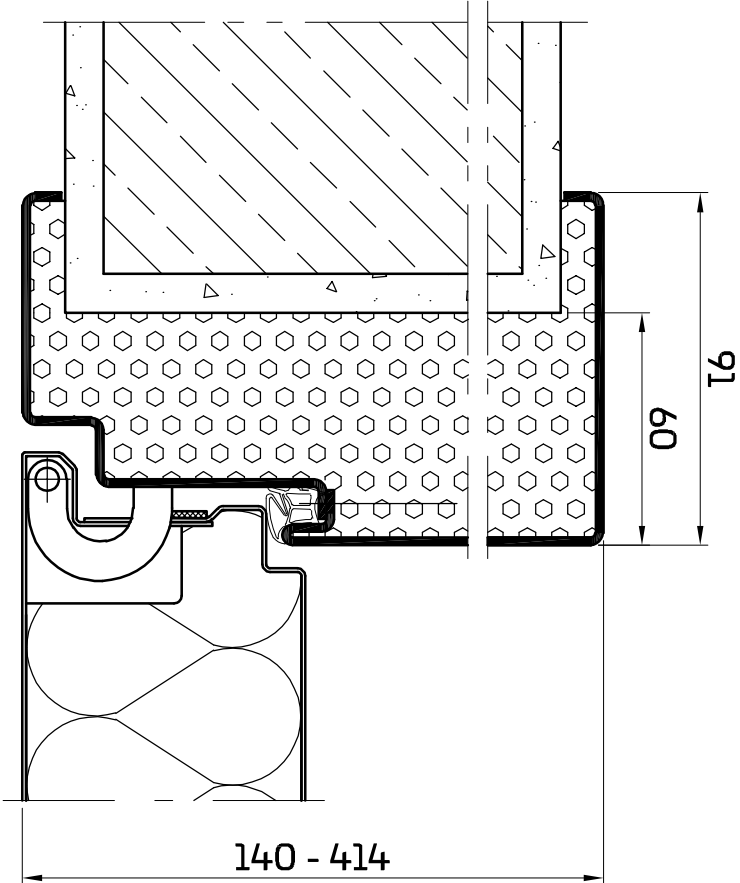
Block 75 / 100
00 / 30



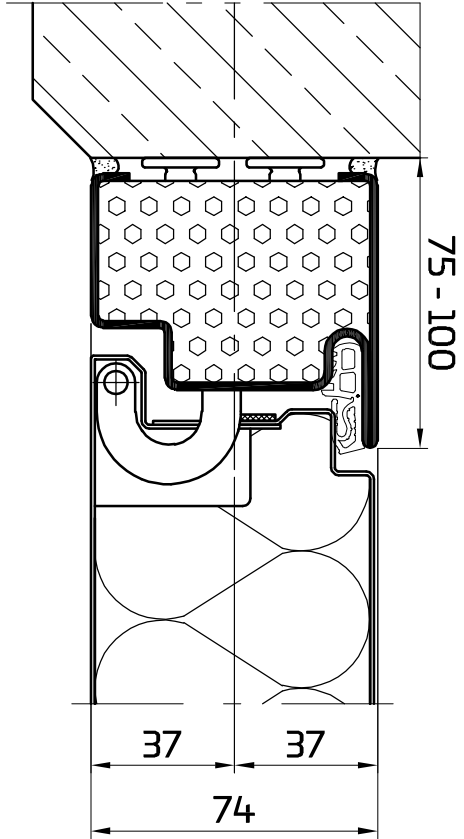
Block Variabel
00 / 30



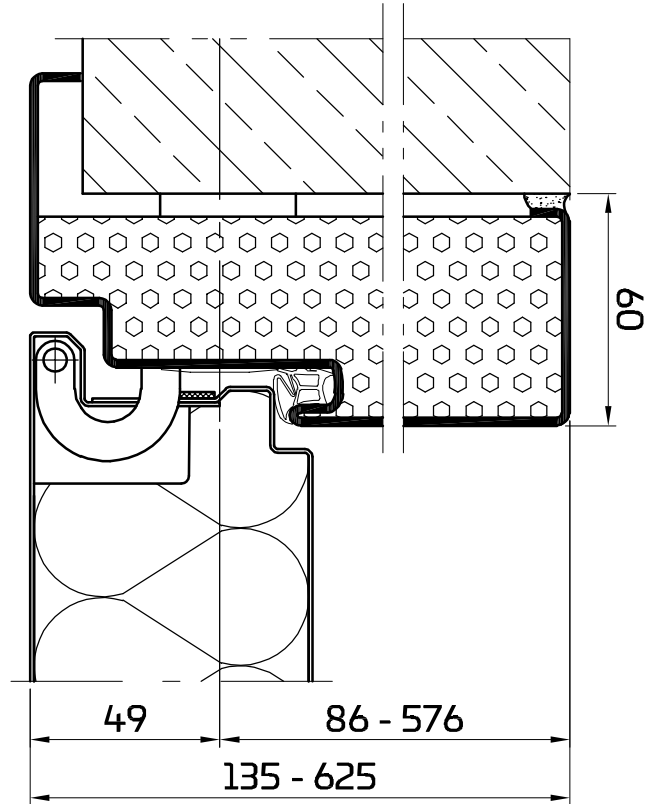
Zweiteilige Umfassungszarge
00 / 30



Stumpfzarge Variabel
00 / 30



Umfassungszarge
00 / 30



Planinhalt
PENEDER HIGHLINEflat
Übersicht Zargen

Gezeichnet	Datum
bisbor	19.03.2026
Blattformat	Maßstab
A3	1:2

Peneder Bauelemente GmbH // Brandschutz
T: +49 89 588 08 594-0 // office@peneder.de // peneder.com

PENEDER
FAST FORWARD

Zargenfüllung je nach Anforderung